



Wenar®

KeContact Charging Solutions & Accessories

Product Overview 2022 – Eastern Europe



KEBA®

Automation by innovation.

KEBA, headquartered in Linz/Austria, is an internationally active, privately owned technology company that has been providing innovative automation solutions for the industrial, banking and service sectors since 1968. Since 2009, we have been applying our know-how to the development and production of holistic charging solutions for electromobility. Our KeContact P30 wallbox series enable simple, safe and reliable charging of hybrid and electric vehicles.

At KEBA Energy Automation, we attach great importance to sustainability: Our production in Linz and the use of predominantly European components ensure short transport routes. This saves CO₂.

Already during the conception of our charging solutions, we pay attention to the recyclability of materials, the energy efficiency of the production as well as the longevity of the products. For the changeover to a purely CO₂-neutral product range, we have gone one step further.

Following the principle of 'cradle-to-customer plus waste' – i.e. from the extraction of raw materials to production and disposal – we surveyed the carbon footprint of our wallboxes with the support of ClimatePartner.

Once we knew this value, we were able to take measures to reduce or avoid greenhouse gas emissions or, if necessary, to compensate for them by investing in selected and certified climate protection projects.

The result is a climate-neutral wallbox range that combines everything our customers want.

You can find information on the climate protection projects we support here:



Carbon neutral

Product

ClimatePartner.com/15395-2011-1001



Contents

- Charging solutions 5**
- Overview of functions 8
- KeContact P30 a-series..... 9
- KeContact P30 c-series..... 12
- KeContact P30 x-series..... 15
- Manage & control charging..... 19**
- KeContact M20 20
- Accessories & Spare Parts 23**
- KeContact P30 accessories 24
- KeContact P30 spare parts 30



Charging solutions



Climate-neutral refuelling

KeContact P30 charging stations

For safe and reliable charging, networking and control

Thanks to compliance with the latest communication standards and a wide array of functions, carbon-neutral KeContact P30 charging stations cover all scenarios for AC (alternating current) charging of fully electric cars and plug-in hybrids, making them the right, sustainable choice every time – whether for private or commercial use.

With its extensive product portfolio, KEBA has the right charging solution for every application. Manufactured in Austria, the robust KeContact charging stations have proved their reliability a hundred-thousand times over extensive periods of operation and stand for reliable, safe charging – so that your electric vehicle is always ready when you need it.



// Charging solutions



Home charging

Easy and reliable charging of all common vehicle models in parking lots of single- and multi-party buildings with the option of

- // Simple user authorization with RFID cards
- // Integration into smart home applications
- // Integration into photovoltaic systems (surplus charging)
- // Integration into billing systems for company cars



Fleet charging

Future-proof charging infrastructure for your fleet with the option of charging and load management:

- // Local load management for regulated charging power distribution
- // Charging for employees and guests
- // Interfaces for monitoring and billing
- // Billing conformity (MID / measurement & calibration law)



Charging for guests & customers

Offer the additional service of charging at your location thanks to

- // Simple user authorization with RFID cards
- // Local load management for optimal distribution of the available energy
- // Exact recording of individual charging sessions

KeContact wallbox series

Overview of functions

| | | |
|--|--|--|
| | | Mobile communication 4G/LTE for wireless communication |
| | | WLAN communication for the wireless integration of wall boxes in an existing network |
| | | Web interface for configuration settings |
| | | Offline logging of charging sessions (up to 3 months) as master or standalone |
| | | Dynamic home connection monitoring with an external power meter via Modbus TCP (active) |
| | Charge control by external systems (Smart Home & Energy Management Systems) via UDP and Modbus TCP (passive) | Charge control by external systems (Smart Home & Energy Management Systems) via UDP and Modbus TCP (passive) |
| | Local, static/dynamic load management as a client | Local, static/dynamic load management as a master |
| | OCCP communication as client | OCCP communication as master or stand-alone |
| | Ethernet interface for permanent installation (LSA+) | Ethernet interface for permanent installation (LSA+) |
| | Freely programmable display | Freely programmable display |
| | For the billing of energy consumption - MID certified* | For the billing of energy consumption - MID certified* |
| | Energy meter | Energy meter |
| Power monitoring*** | Power monitoring*** | Power monitoring*** |
| RFID user authorization* | RFID user authorization* | RFID user authorization* |
| LED strip for status information | LED strip for status information | LED strip for status information |
| DC-leakage detection | DC-leakage detection | DC-leakage detection |
| Enable input / switch output | Enable input / switch output | Enable input / switch output |
| Ethernet interface (RJ45) - debug | Ethernet interface (RJ45) - debug | Ethernet interface (RJ45) - debug |
| USB interface | USB interface | USB interface |
| Z.E. Ready / EV Ready (available in the course of '22) | Z.E. Ready / EV Ready | Z.E. Ready / EV Ready |
| a-series | c-series | x-series |
| Single-phase & three-phase operation | Single-phase & three-phase operation | Single-phase & three-phase operation |
| Max. charging power: 7.4 / 11 / 22 kW** | Max. charging power: 11 / 22 kW** | Max. charging power: 11 / 22 kW** |
| Max. charging current per phase: 16 A / 32A** | Max. charging current per phase: 16 A / 32A** | Max. charging current per phase: 16 A / 32A** |
| Independent operation | Controlled charging | Intelligent charging |

* Optional. Due to technical or legal restrictions, not all variants/options are available in all combinations

** Varies according to product variant

*** Not available for cable variants

KeContact P30 a-series

The a-series is the entry level for easy and safe charging with a single wallbox.

All models are capable of 1- and 3-phase charging and have an LED status bar indicator.



// Charging solutions



a-series Wallboxes with type 2 socket

All wallboxes have

- // Type 2 charging socket
- // White design cover
- // LED bar for charging status
- // Single and three-phase operation
- // Enable input / switching output
- // USB connection for firmware updates
- // RJ45 Ethernet connection for firmware updates and debugging

| Product designation | Charging current [A] adjustable | Maximum charging power | Energy meter | MID-certified | WLAN | LTE/4G | RFID | Item number |
|---|---------------------------------|------------------------|--------------|---------------|------|--------|------|-------------|
| a-series EN Type2 3p Socket 22kW - GREEN EDITION | 10, 13, 16, 20, 25, 32 | up to 22 kW | | | | | | 121 953 |
| a-series EN Type2 3p Socket 22kW-RFID - GREEN EDITION | 10, 13, 16, 20, 25, 32 | up to 22 kW | | | | | ● | 121 954 |

// Charging solutions



a-series Wallboxes with type 2 cable

- All wallboxes have
- // 6 m type 2 cable
 - // Cable holder
 - // White design cover
 - // LED bar for charging status
 - // Single and three-phase operation
 - // Enable input / switching output
 - // USB connection for firmware updates
 - // RJ45 Ethernet connection for firmware updates and debugging

| Product designation | Charging current [A] adjustable | Maximum charging power | Energy meter | MID-certified | WLAN | LTE/4G | RFID | Item number |
|---|---------------------------------|------------------------|--------------|---------------|------|--------|------|-------------|
| a-series EN Type2 3p 6m Cable 11kW - GREEN EDITION | 10, 13, 16 | up to 11 kW | | | | | | 120 163 |
| a-series EN Type2 3p 6m Cable 11kW-RFID - GREEN EDITION | 10, 13, 16 | up to 11 kW | | | | | ● | 123 559 |
| a-series EN Type2 3p 6m Cable 22kW - GREEN EDITION | 10, 13, 16, 20, 25, 32 | up to 22 kW | | | | | | 122 119 |
| a-series EN Type2 3p 6m Cable 22kW-RFID - GREEN EDITION | 10, 13, 16, 20, 25, 32 | up to 22 kW | | | | | ● | 122 120 |

KeContact P30 c-series

The connective c-series with a certified energy meter can be integrated into the smart home or a photovoltaic system using an energy management system thanks to its standard communication interfaces.



// Charging solutions



c-series Wallboxes with type 2 socket

All wallboxes have

- // Type 2 charging socket
- // White design cover
- // LED bar for charging status
- // Single and three-phase operation
- // Freely programmable display
- // Enable input / switching output

- // USB connection for firmware updates
- // RJ45 Ethernet connection for firmware updates and debugging
- // Ethernet connection LSA+ for a permanent network connection to an x-series or other systems
- // UDP interface and Modbus TCP (passive) for integration in smart home and PV systems (via external controller)
- // Communication for OCPP and load management as client

| Product designation | Charging current [A] adjustable | Maximum charging power | Energy meter | MID-certified | WLAN | LTE/4G | RFID | Item number |
|--|---------------------------------|------------------------|--------------|---------------|------|--------|------|-------------|
| c-series EN Type2 Socket 22kW - GREEN EDITION | 10, 13, 16, 20, 25, 32 | up to 22 kW | ● | | | | | 121 915 |
| c-series EN Type2 Socket 22kW-RFID - GREEN EDITION | 10, 13, 16, 20, 25, 32 | up to 22 kW | ● | | | | ● | 121 919 |
| c-series EN Type2 Socket 22kW-RFID-MID - GREEN EDITION | 10, 13, 16, 20, 25, 32 | up to 22 kW | ● | ● | | | ● | 121 917 |
| c-series EN Type2 Socket 22kW-MID - GREEN EDITION | 10, 13, 16, 20, 25, 32 | up to 22 kW | ● | ● | | | | 104 422 |

// Charging solutions



c-series Wallboxes with type 2 cable

All wallboxes have

- // 6 m type 2 cable
- // White design cover
- // Cable holder
- // LED bar for charging status
- // Single and three-phase operation
- // Freely programmable display
- // Enable input / switching output

// USB connection for firmware updates

- // RJ45 Ethernet connection for firmware updates and debugging
- // Ethernet connection LSA+ for a permanent network connection to an x-series or other systems
- // UDP interface and Modbus TCP (passive) for integration in smart home and PV systems (via external controller)
- // Communication for OCPP and load management as client

| Product designation | Charging current [A] adjustable | Maximum charging power | Energy meter | MID-certified | WLAN | LTE/4G | RFID | Item number |
|--|---------------------------------|------------------------|--------------|---------------|------|--------|------|-------------|
| c-series EN Type2 6m Cable 22kW - GREEN EDITION | 10, 13, 16, 20, 25, 32 | up to 22 kW | ● | | | | | 122 108 |
| c-series EN Type2 6m Cable 22kW-RFID - GREEN EDITION | 10, 13, 16, 20, 25, 32 | up to 22 kW | ● | | | | ● | 122 112 |
| c-series EN Type2 6m Cable 22kW-RFID-MID - GREEN EDITION | 10, 13, 16, 20, 25, 32 | up to 22 kW | ● | ● | | | ● | 122 113 |
| c-series EN Type2 6m Cable 22kW-MID - GREEN EDITION | 10, 13, 16, 20, 25, 32 | up to 22 kW | ● | ● | | | | 105 143 |

KeContact P30 x-series

Smart e-mobility solutions can be optimally implemented using the x-series. The versatile device enables intelligent control of multiple charging points, including dynamic load management.

One x-series wallbox can control up to 15 c-series devices. The corresponding web interface allows central configuration and the viewing of individual chargesessions. All x-series models feature a WLAN communication interface as a standard.



// Charging solutions



x-series Wallboxes with type 2 socket

All wallboxes have

- // Type 2 charging socket
- // White design cover
- // LED bar for charging status
- // Single and three-phase operation
- // Freely programmable display
- // Enable input / switching output
- // USB connection for firmware updates and configuration
- // RJ45 Ethernet connection for firmware updates and debugging

- // Ethernet connection LSA+ for a permanent connection to backend or smart home servers or other KeContact P30 wallboxes
- // UDP interface and Modbus TCP (passive) for integration in smart home and PV systems (via external controller)
- // Modbus TCP (active) communication with the external energy counter for charging current regulation and house connection monitoring
- // OCPP, communication for load management and backend connection as master or stand-alone

| Product designation | Charging current [A] adjustable | Maximum charging power | Energy meter | MID-certified | WLAN | LTE/4G | RFID | Item number |
|---|---------------------------------|------------------------|--------------|---------------|------|--------|------|-------------|
| x-series EN Type2 Socket 22kW - GREEN EDITION | 10, 13, 16, 20, 25, 32 | 22 kW | ● | | ● | | | 123 257 |
| x-series EN Type2 Socket 22kW -RFID - GREEN EDITION | 10, 13, 16, 20, 25, 32 | 22 kW | ● | | ● | | ● | 124 564 |
| x-series EN Type2 Socket 22kW -RFID-MID - GREEN EDITION | 10, 13, 16, 20, 25, 32 | 22 kW | ● | ● | ● | | ● | 121 951 |
| x-series EN Type2 Socket 22kW -4G-RFID-MID - GREEN EDITION | 10, 13, 16, 20, 25, 32 | 22 kW | ● | ● | ● | ● | ● | 121 950 |
| x-series EN Type2 Socket 22kW -MID - GREEN EDITION | 10, 13, 16, 20, 25, 32 | 22 kW | ● | ● | ● | | | 105 150 |
| x-series EN Type2 Socket 22kW -WLAN/4G - GREEN EDITION | 10, 13, 16, 20, 25, 32 | 22 kW | ● | | ● | ● | | 109 651 |
| x-series EN Type2 Socket 22kW -WLAN/4G - RFID - GREEN EDITION | 10, 13, 16, 20, 25, 32 | 22 kW | | | ● | ● | ● | 109 652 |

// Charging solutions



x-series Wallboxes with type 2 cable

- All wallboxes have a
- // 6 m type 2 cable
 - // Cable holder
 - // White design cover
 - // LED bar for charging status
 - // Single and three-phase operation
 - // Freely programmable display
 - // Enable input / switching output
 - // USB connection for firmware updates and configuration

- // RJ45 Ethernet connection for firmware updates and debugging
- // Ethernet connection LSA+ for a permanent connection to backend or smart home server or other KeContact P30 wallboxes
- // UDP interface and Modbus TCP (passive) for integration in smart home and PV systems (via external controller)
- // Modbus TCP (active) communication with external energy counter for charging current regulation and house connection monitoring
- // OCPP, communication for load management and backend connection as master or stand-alone

| Product designation | Charging current [A] adjustable | Maximum charging power | Energy meter | MID-certified | WLAN | LTE/4G | RFID | Item number |
|---|---------------------------------|------------------------|--------------|---------------|------|--------|------|-------------|
| x-series EN Type2 6m Cable 22kW - GREEN EDITION | 10, 13, 16, 20, 25, 32 | 22 kW | ● | | ● | | | 122 114 |
| x-series EN Type2 6m Cable 22kW-RFID - GREEN EDITION | 10, 13, 16, 20, 25, 32 | 22 kW | ● | | ● | | ● | 122 116 |
| x-series EN Type2 6m Cable 22kW-RFID-MID - GREEN EDITION | 10, 13, 16, 20, 25, 32 | 22 kW | ● | ● | ● | | ● | 122 111 |
| x-series EN Type2 6m Cable 22kW-4G-RFID-MID - GREEN EDITION | 10, 13, 16, 20, 25, 32 | 22 kW | ● | ● | ● | ● | ● | 123 250 |



Manage & control
charging

// Manage & control charging

KeContact M20 Charging Management Controller

KeContact M20 – the central control unit for the convenient control of a large, local charging network of KeContact wallboxes. Organise multiple charging stations easily and optimise the use of available power.

- // Central configuration via web interface
 - // Create up to 15 charging station clusters that can be freely configured as a unit
 - // Static and dynamic load management
 - // Option for symmetrical and phase-correct charging to avoid unbalanced loads
 - // Log all charging sessions for up to 3 months (stored locally)
-
- // Dimensions: 33 mm x 80 mm x 121.2 mm; weight 750 g
 - // SIM card format: 4FF Nano
 - // Scope of delivery: Top-hat rail for mounting in the control cabinet, 230 V power supply unit, external LTE antenna (cable length 2 m), screwdriver



| Product designation | Number of controllable charging points | Communication interface | SIM card slot | LAN | LTE/4G | Item number |
|--|--|-------------------------|---------------|-----|--------|-------------|
| Charging Management Controller-LAN-4G medium | 40 | OCPP | ● | ● | ● | 122 008 |
| Charging Management Controller-LAN-4G large | 200 | OCPP | ● | ● | ● | 124 561 |

// Manage & control charging



Accessories & Spare Parts



Suitable for KEBA charging stations

KeContact P30 accessories

Everything you need for your wallbox

A selection of accessories is available for KeContact charging stations.
From the robust stainless steel stand to the standard-compliant sticker set.



// Accessories



KC-P30 pedestal, single – stainless steel

- // Stand for mounting a KeContact wallbox
- // Suitable for indoor and outdoor use
- // Material: Stainless steel 1.4301
- // Surface: Polished K220
- // Including assembly material

Item no. 89 735



KC-P30 pedestal, double – stainless steel

- // Stand for mounting two KeContact wallboxes
- // Suitable for indoor and outdoor use
- // Material: Stainless steel 1.4301
- // Surface: Polished K220
- // Including assembly material

Item no. 90 786



KC-P30 pedestal, triangle – stainless steel

- // Stand for mounting two KeContact wallboxes
- // Suitable for indoor and outdoor use
- // Material: Stainless steel 1.4301
- // Surface: Polished K220
- // Including assembly material

Item no. 99 839



Indoor base plate – stainless steel

- // Stainless-steel base plate for assembling stands without a foundation
- // for indoor use for exhibition purposes
- // Dimensions: 800 x 800 mm
- // Material: Stainless steel 1.4301
- // Surface: Polished K220

Item no. 86 350

// Accessories



Acrylic glass pedestal for wallbox mockup

// Acrylic glass stand for mounting a KeContact wallbox
// for indoor use for exhibition purposes

Item no. 110 880

// Accessories

Charging station dummies



KeContact wallbox mockup, type 2 socket, grey

- // Grey wallbox dummy without technical function for exhibition purposes
- // with symbol image below the socket cover

Item no. 98 326



KeContact wallbox mockup, type 2 socket, white

- // White wallbox dummy without technical function for exhibition purposes
- // with symbol image below the socket cover

Item no. 111 642



KeContact wallbox mockup, type 2 socket, black

- // Black wallbox dummy without technical function for exhibition purposes
- // with symbol image below the socket cover

Item no. 111 641



KeContact wallbox mockup, type 2 cable, grey

- // Grey wallbox dummy with cable and holder without technical function for exhibition purposes
- // The charging cable can be plugged into a vehicle for demonstration purposes

Item no. 107 661

// Accessories

RFID cards – KEBA design

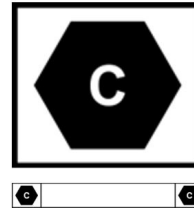
// RFID cards
// 10 per package

Item no. 96 089



Sticker sets for charging stations

EN17186 set for EU cable



// EN17186 sticker set for EU cable
// According to the requirement in the EU
// Consisting of two stickers with the dimensions
50 x 45 mm and 25 x 120 mm (to be applied
on the charging cable)
// 2 x 50 per package

Item no. 120 491

EN17186 set for EU socket



// EN17186 sticker for EU socket
// According to the requirement in the EU
// Dimensions: 50 x 45 mm
// 50 per package

Item no. 120 490

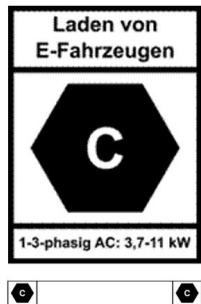


// Accessories

Sticker sets for charging stations



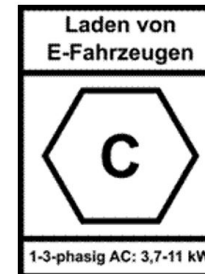
EN17186 set for DE cable 3p11kW



- // EN17186 sticker set for DE cable 11kW
- // According to the requirement in the Germany
- // Consisting of two stickers with the dimensions 60 x 75 mm and 25 x 120 mm (to be applied on the charging cable)
- // 2 x 50 per package

Item no. 120 492

EN17186 set for DE socket 3p11kW



- // EN17186 sticker set for DE socket 11kW
- // According to the requirement in the Germany
- // Dimensions: 60 x 75 mm
- // 50 per package

Item no. 120 495

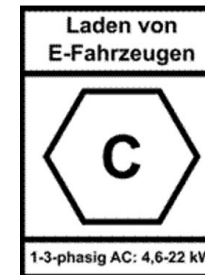
EN17186 set for DE cable 3p22kW



- // EN17186 sticker set for DE cable 22kW
- // According to the requirement in the Germany
- // Consisting of two stickers with the dimensions 60 x 75 mm and 25 x 120 mm (to be applied on the charging cable)
- // 2 x 50 per package

Item no. 120 493

EN17186 set for DE socket 3p22kW



- // EN17186 sticker set for DE socket 11kW
- // According to the requirement in the Germany
- // Dimensions: 60 x 75 mm
- // 50 per package

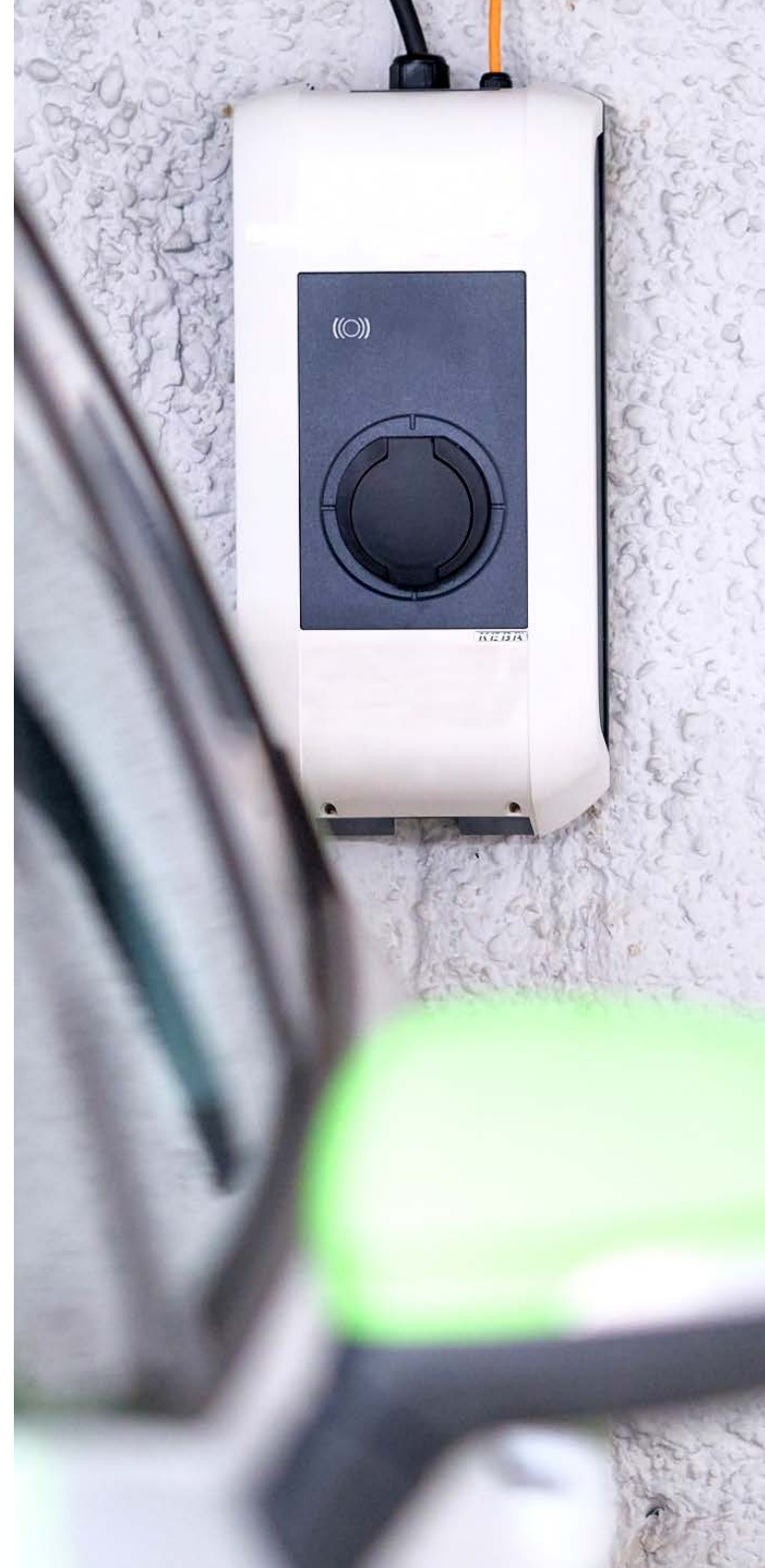
Item no. 120 494

Suitable for KEBA charging stations

KeContact P30 spare parts

Spare parts for all your needs

Did you lose a screw? Do you need a new design cover? No problem! We have the right replacement to fix (almost) any little problem with our KeContact charging stations. This applies to assembly material, packaging, cover parts and spare parts alike.



// Spare parts

Design cover GREEN EDITION



// Wallbox front cover in white
with GREEN EDITION lettering
// Colours: Front RAL 7004
Side parts RAL 7016

Item no. 120 623

Design cover, standard, grey



// Wallbox front cover in grey
// Colours: Front RAL 7004
Side parts RAL 7016

Item no. 108 352

Design cover, a-series



// Wallbox front cover in white
// Colours: Front RAL 7004
Side parts RAL 7016
// No "GREEN EDITION" imprint

Item no. 120 622

Design cover, white



// Wallbox front cover in white
// Colours: Front: RAL 9010 /
Side parts RAL 7016

Item no. 108 354

Design cover, black



// Wallbox front cover in black
// Colours: Front: RAL 9005 /
Side parts RAL 9005

Item no. 107 544

// Spare parts

Packaging set for P30 cable types



12 sets, one set consisting of:
// Outer packaging
// Inner packaging
// Drilling template
// Instruction manual
// Assembly material
// Cable holder
// Cardboard divider (wallbox – cable)
// Packed on a EURO pallet,
Dimensions:
1200 x 800 x 1250 mm

Item no. 124 170

Packaging set for P30 socket types



12 sets, one set consisting of:
// Outer packaging
// Inner packaging
// Drilling template
// Instruction manual
// Assembly material
// Packed on a EURO pallet
Dimensions:
1200 x 800 x 1250 mm

Item no. 124 173

Terminal cover set



Terminal cover matching all
KeContact P30 charging stations
// Set consisting of 10 covers
// including fastening screws (20 pcs)
// Dimensions: 250 x 180 x 170 mm

Item no. 124 305

Connection panel cover set



Connection area cover suitable for all KeContact
P30 charging stations
// Set consisting of 10 covers
// including fastening screws (40 pcs)
// Dimensions: 310 x 220 x 320 mm

Item no. 124 307

// Spare parts

Holder for charging cable



Charging cable holder suitable for all KeContact P30 charging stations

// Including fastening screws and screw covers

// Dimensions: Width 102 mm, height 164 mm, depth 131 mm

// Colour: RAL 7016

Item no. 90 234

Spare screw set for design cover



Spare screws for fastening the design cover

// 10 pcs

// Suitable for all KeContact P30 charging stations

Item no. 106 428

Retaining spring for connector parking bay



// Spare retaining spring for connector parking bay

// 10 pcs

Item no. 106 430

Sealing caps for terminal cover / connection panel cover



Sealing cap set consisting of:

// Sealing caps for terminal cover (50 pcs)

// Sealing caps for connection panel cover (50 pcs)

// For sealing purposes

Item no. 109 056

// Spare parts

Installation kit for KeContact P30

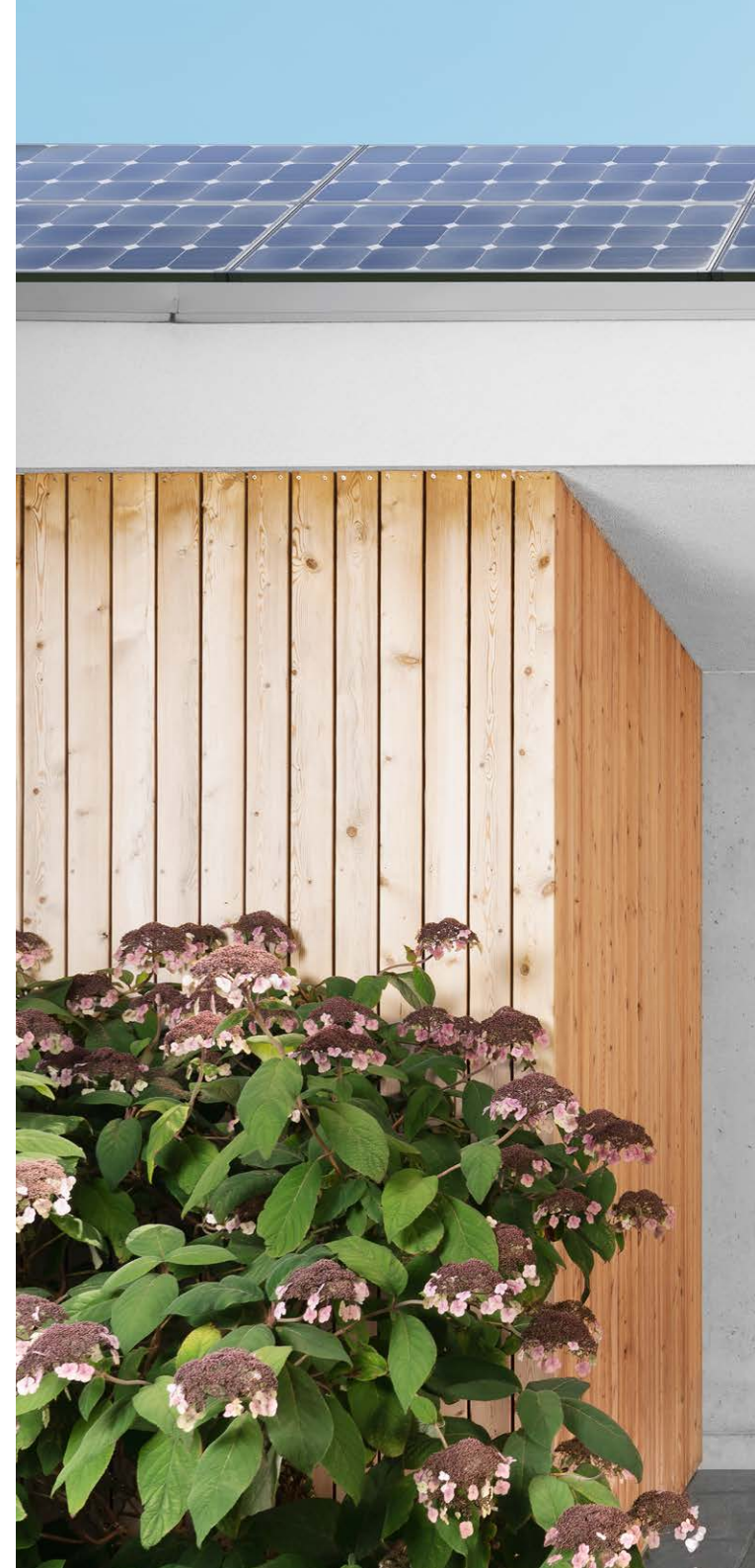
Assembly material kit supplied as standard with KeContact charging stations.

The kit contains:

// Fastening material for assembling the charging station on the wall

// Cable glands including seal and sealing caps

Item no. 89 986





KEBA Energy Automation GmbH

Reindlstraße 51, 4040 Linz/Austria, telephone +43 732 7090-0, keba@keba.com

KEBA Group worldwide

Austria / China / Czech Republic / Germany / India / Italy / Japan / Netherlands
Romania / South Korea / Switzerland / Taiwan / Turkey / United Kingdom / USA

www.keba.com/emobility

Copyright © (2022) KEBA Energy Automation GmbH 2022_4_EN. We reserve the right to make changes in the interests of further technical development. Information provided without guarantee. All rights reserved.



KEBA[®]

Automation by innovation.